



BARKER'S ISLAND IMPROVEMENT PROJECT

Connecting People to Water Resources

The project included native plantings and adjusted to the right per three of the many species listed.

A GREENER BARKER'S ISLAND
The National Park and Wildlife Federation (NFWF) grant. This funding project is used to improve water quality and increase the resilience of the park's ecosystems. The project includes native plantings and adjusted to the right per three of the many species listed.

WHAT IS BARKER'S ISLAND?
Barker's Island is a small, undeveloped island in the St. Louis River Estuary. It is a natural habitat for many species of birds and plants. The island is a popular destination for birdwatchers and nature enthusiasts.

ST. LOUIS RIVER ESTUARY
The St. Louis River Estuary is a large body of water that connects the St. Louis River to the Mississippi River. It is a vital habitat for many species of fish and birds.

NATIVE FISH AND WILDLIFE MONITORING
The project includes native plantings and adjusted to the right per three of the many species listed.

MARSH RESTORATION WET POOL
The project includes native plantings and adjusted to the right per three of the many species listed.

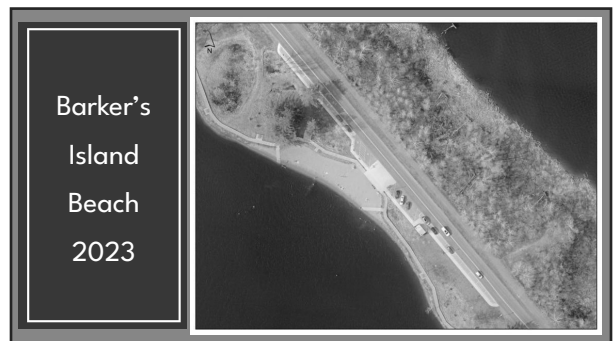
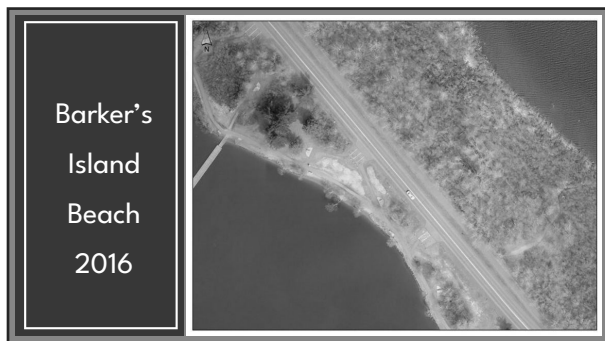
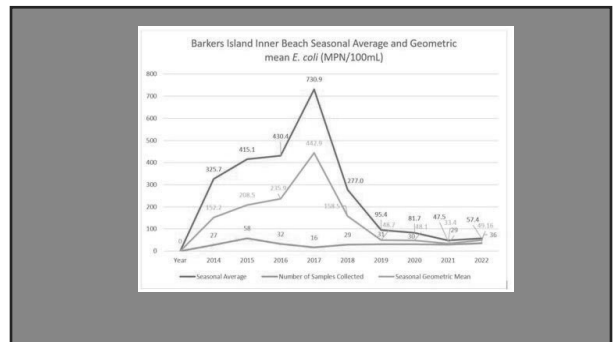
RAIN GARDEN
The project includes native plantings and adjusted to the right per three of the many species listed.

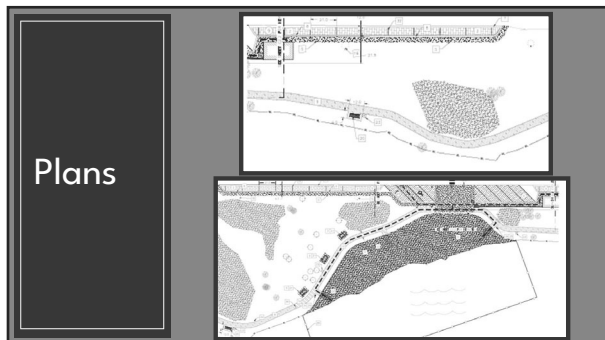
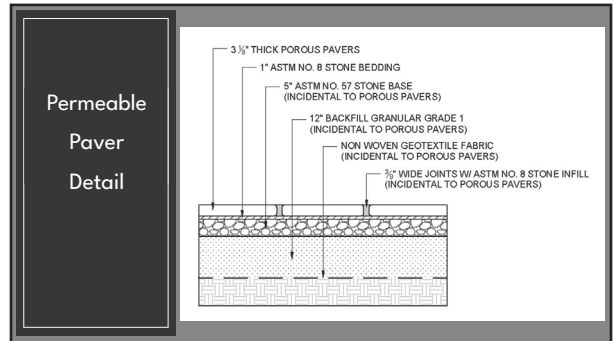
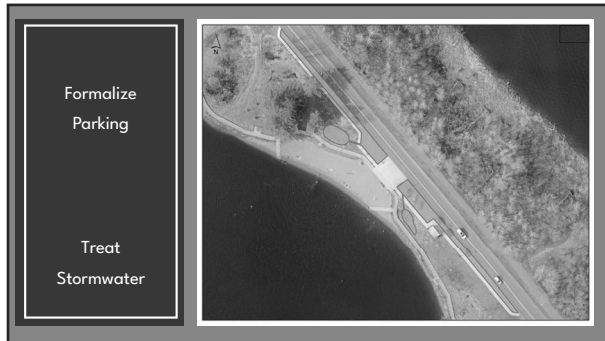
BARKER'S ISLAND
The project includes native plantings and adjusted to the right per three of the many species listed.

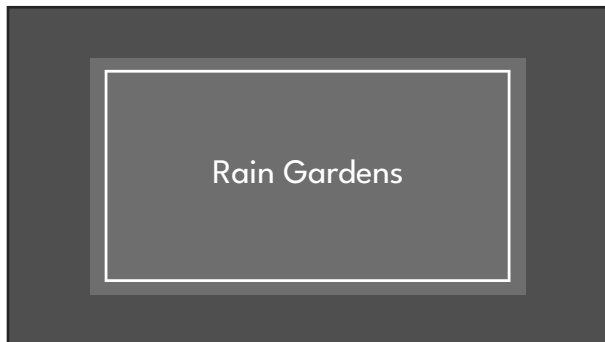
WETLAND & BEACH RESTORATION
The project includes native plantings and adjusted to the right per three of the many species listed.

BOAT LANDING PARKING LOT
The project includes native plantings and adjusted to the right per three of the many species listed.

MARSH RESTORATION WETLAND PROJECT
The project includes native plantings and adjusted to the right per three of the many species listed.









Plant Species: Plugs

Wildflowers:

- Giant Hyssop
- Pussytoes
- Columbine
- Horebell
- Northern Bedstraw
- Common Ox-eye
- Wild Bergamot
- Black-eyed Susan

Goldenrod varieties

- Chokeberry varieties
- Meadow Rose
- Serviceberry
- Red Elderberry
- Dwarf Bush Honeysuckle
- Sand Cherry
- Meadowweet
- Bog Birch

Wildflowers- Wet Meadow Seed Mix

<p>Sweet flag (<i>Acorus americanus</i>)</p> <p>Canada anemone (<i>Anemone canadensis</i>)</p> <p>Swamp milkweed (<i>Asclepias incarnata</i>)</p> <p>Marsh marigold (<i>Caltha palustris</i>)</p> <p>Turtlehead (<i>Chelone glabra</i>)</p> <p>Joe-pye weed (<i>Eutrochium maculatum</i>)</p> <p>Wild strawberry (<i>Fragaria virginiana</i>)</p> <p>Bottle gentian (<i>Gentiana andrewsii</i>)</p> <p>Purple avens (<i>Geum rivale</i>)</p> <p>Giant sunflower (<i>Helianthus giganteus</i>)</p> <p>Wild iris (<i>Iris versicolor</i>)</p>	<p>Turk's cap lily (<i>Lilium michiganense</i>)</p> <p>Fringed loosestrife (<i>Lythymochia ciliata</i>)</p> <p>Monkey flower (<i>Mimulus ringens</i>)</p> <p>Wild bergamot (<i>Monarda fistulosa</i>)</p> <p>Dwarf raspberry (<i>Rubus pubescens</i>)</p> <p>Green-headed coneflower (<i>Rudbeckia lacinata</i>)</p> <p>Arrowhead (<i>Sagittaria latifolia</i>)</p> <p>Swamp goldenrod (<i>Solidago uliginosa</i>)</p> <p>Giant Burreed (<i>Sporogonium eurycarpum</i>)</p> <p>Panicled aster (<i>Symphotrichum lanceolatum</i>)</p> <p>Red-stalked aster (<i>Symphotrichum panicum</i>)</p> <p>Tall meadow rue (<i>Thalictrum dasycarpum</i>)</p> <p>Blue vervain (<i>Verena hastata</i>)</p> <p>Golden alexanders (<i>Zizia aurea</i>)</p>
---	--

Grasses and Sedges - Wet Meadow Seed Mix

<p>Big bluestem (<i>Andropogon gerardii</i>)</p> <p>Fringed brome (<i>Bromus ciliatus</i>)</p> <p>Blue joint grass (<i>Calamagrostis canadensis</i>)</p> <p>Caterpillar sedge (<i>Carex crinita</i>)</p> <p>Graceful sedge (<i>Carex gracillima</i>)</p> <p>Lake sedge (<i>Carex lasiocarpa</i>)</p> <p>Wood sedge (<i>Carex rosea</i>)</p> <p>Pointed broom sedge (<i>Carex scoparia</i>)</p> <p>Long-beaked sedge (<i>Carex sprengei</i>)</p> <p>Stalk grain sedge (<i>Carex stipata</i>)</p> <p>Tussock sedge (<i>Carex stricta</i>)</p>	<p>Fox sedge (<i>Carex vulpinoidea</i>)</p> <p>Canada wild rye (<i>Elymus canadensis</i>)</p> <p>Wild rye (<i>Elymus virginicus</i>)</p> <p>Rattlesnake manna grass (<i>Glyceria canadensis</i>)</p> <p>Tall manna grass (<i>Glyceria grandis</i>)</p> <p>Soft rush (<i>Juncus effusus</i>)</p> <p>Path rush (<i>Juncus tenuis</i>)</p> <p>Soft-stem bulrush (<i>Schoenoplectus tabernaemontani</i>)</p> <p>Green bulrush (<i>Scirpus atrovirens</i>)</p> <p>Wool grass (<i>Scirpus cyperinus</i>)</p>
---	--

Beach & Rain Garden Project Partners

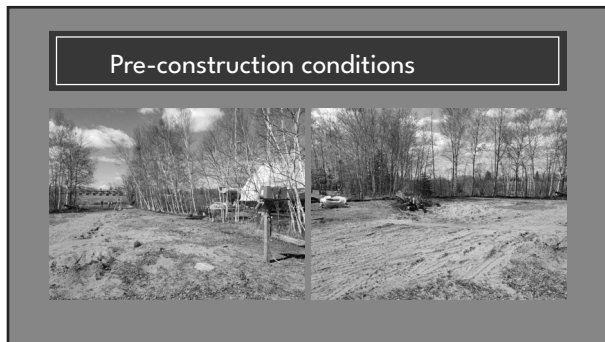
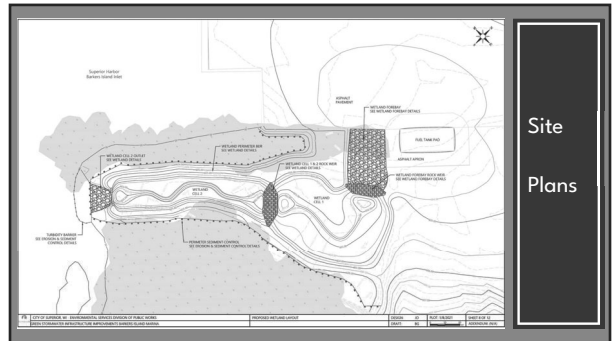
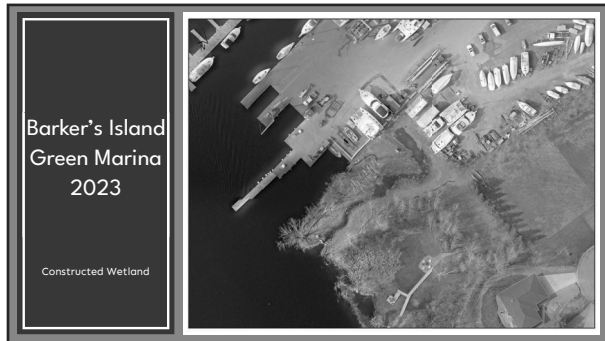
- City of Superior – Parks, Recreation and Forestry
- City of Superior – Environmental Services
- Wisconsin Department of Natural Resources
- Lake Superior Research Institute
- AMI Consulting Engineers
- Stack Brothers
- Boreal Natives - Division of Prairie Restorations

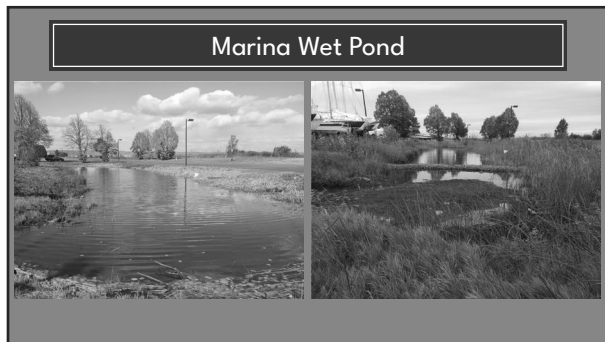
**Barker's
Green Marina**

**Barker's Island
Green Marina
2019**

Constructed Wetland

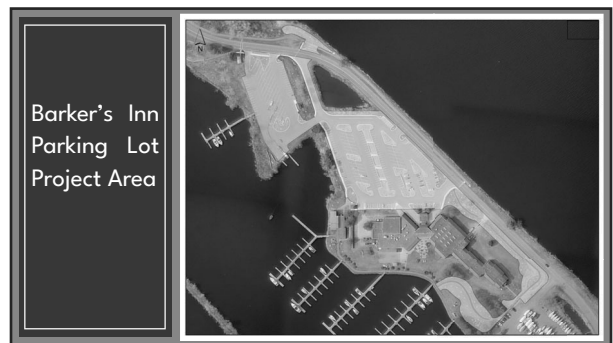


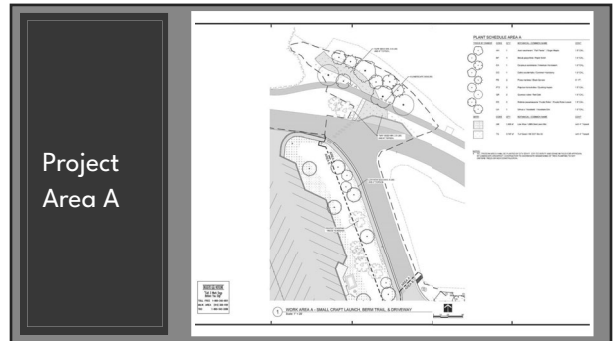
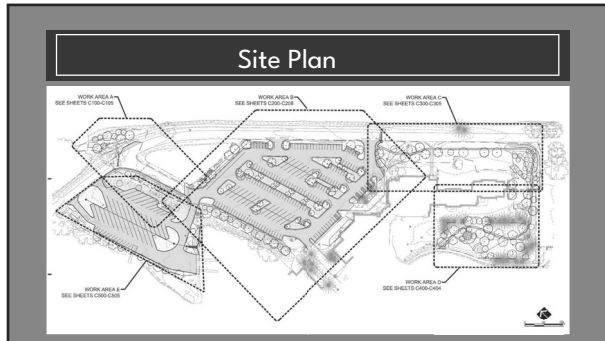


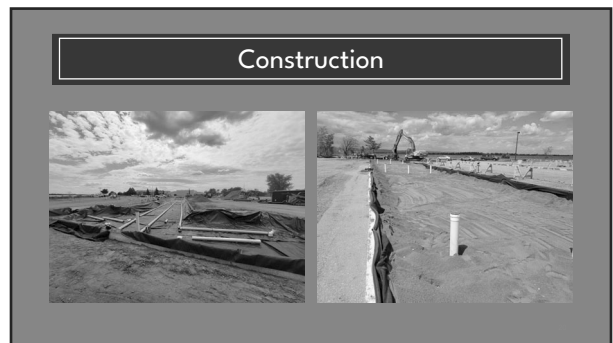
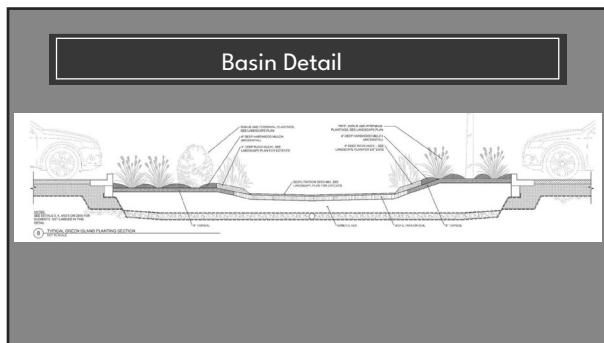
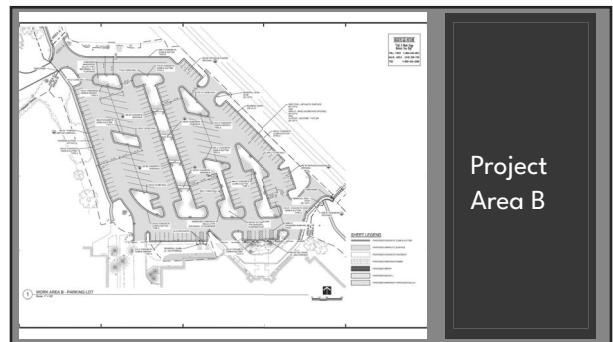
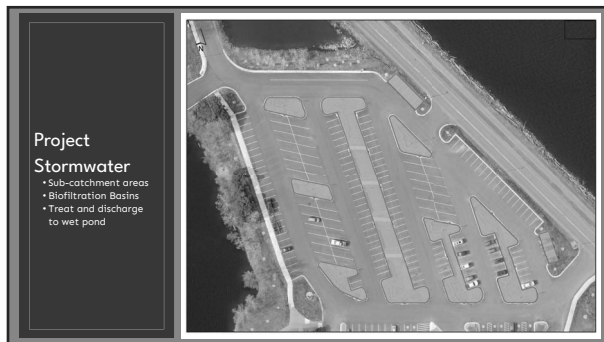


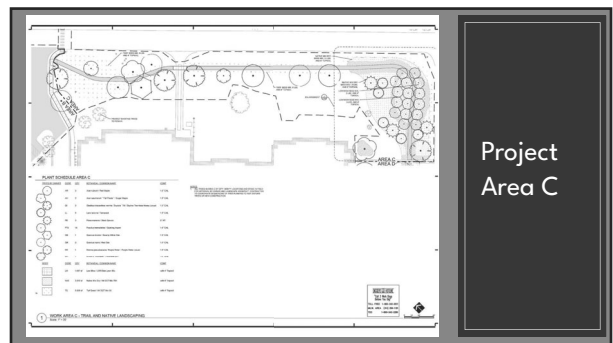
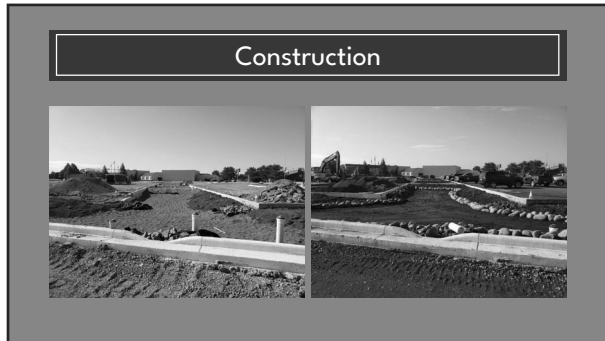
- Green
Marina
Project
Partners
- City of Superior – Parks, Recreation and Forestry
 - City of Superior – Environmental Services
 - Barker's Island Marina
 - Great Lakes Protection Fund
 - Ohio State University
 - University of Michigan
 - University of Wisconsin Sea Grant Institute
 - Wisconsin Coastal Management Program
 - Prairie Restorations
 - Northland Constructors

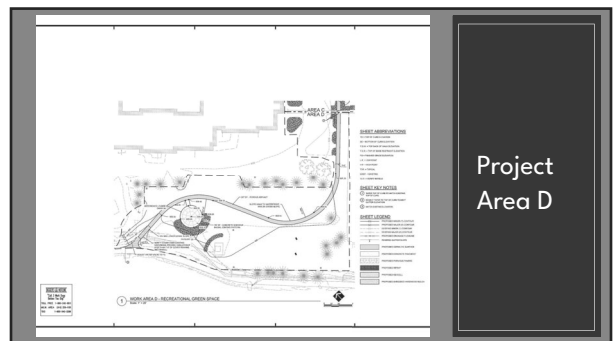
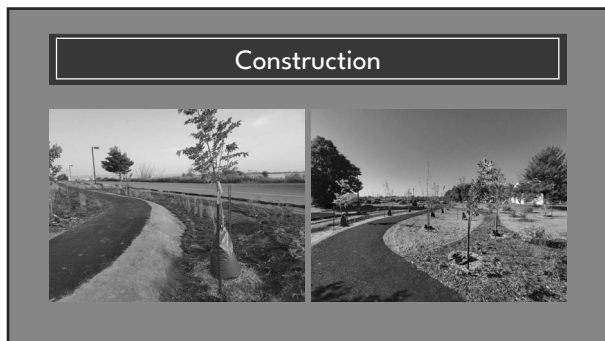
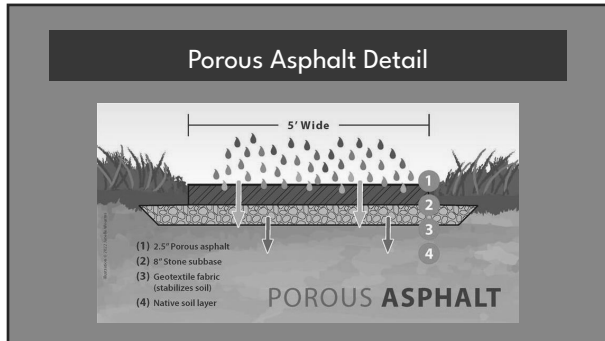
Parking Lot
Replacements

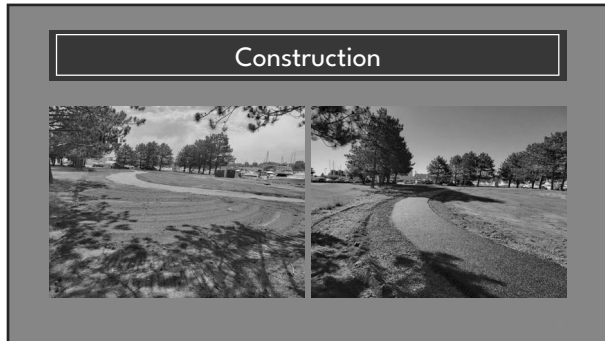








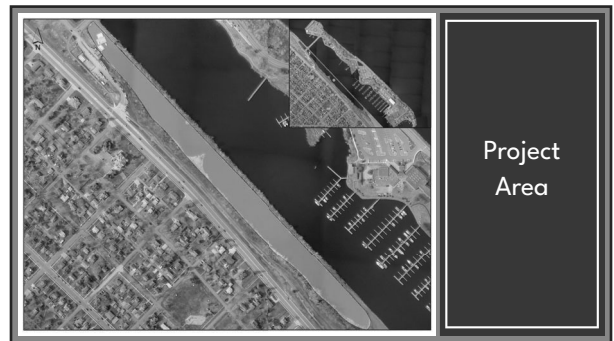






Parking Lot
Project
Partners

- City of Superior - Public Works
 - Parks, Recreation, and Forestry
 - Street Department
 - Environmental Services
- Weyandt Engineering
- Wren Works
- National Fish and Wildlife Foundation
- Great Lakes Restoration Initiative
- LHB



Pickle Pond

Project Goals <ul style="list-style-type: none"> • Remove impairments for delisting – Beneficial Use • Improve plant communities • Reduce stormwater loading • Improve sediment quality • Improve habitat 	Contaminants <ul style="list-style-type: none"> • Lead • Zinc • Copper • Mercury • Polycyclic aromatic hydrocarbons (PAHs) • Polychlorinated biphenyls (PCBs)
---	--



Pickle Pond Project Partners

- Environmental Protection Agency
 - Great Lakes Area of Concern
- Wisconsin Department of Natural Resources
- City of Superior Public Works
 - Parks, Recreation, and Forestry
 - Environmental Services
- Lake Superior National Estuarine Research Reserve
- University of Minnesota-Duluth National Resources Research Institute



A dark gray slide with a white border. At the top, the word "Questions" is centered between two white arrow-like symbols. Below this, contact information for Ida Sampson and Michael Krick is provided in two columns. At the bottom left is the City of Superior logo, and at the bottom right is a QR code.

Questions

Ida Sampson
Stormwater & Admin Manager
715-395-5826
sampsoni@superiorwi.gov

Michael Krick
Water Resources
Specialist
715-395-5837
krickm@superiorwi.gov

City of Superior
Environmental Services Division
stormwater@superiorwi.gov