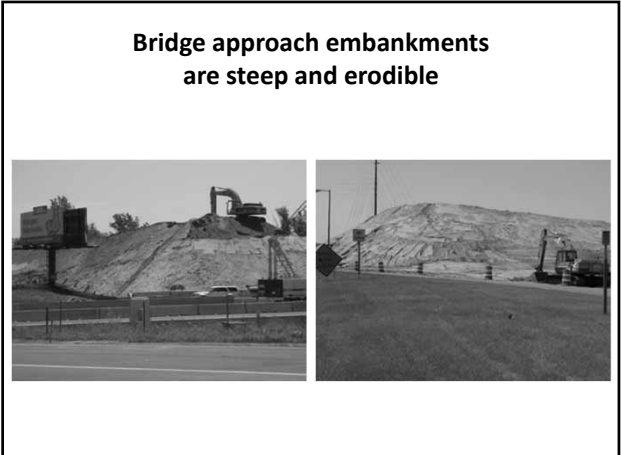




1



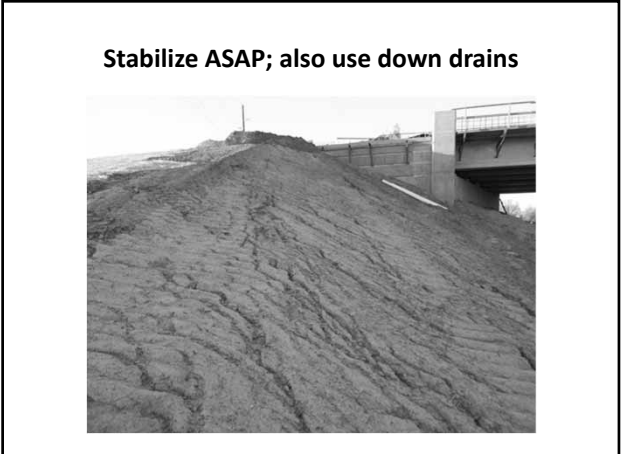
2



3



4



5



6



7



8

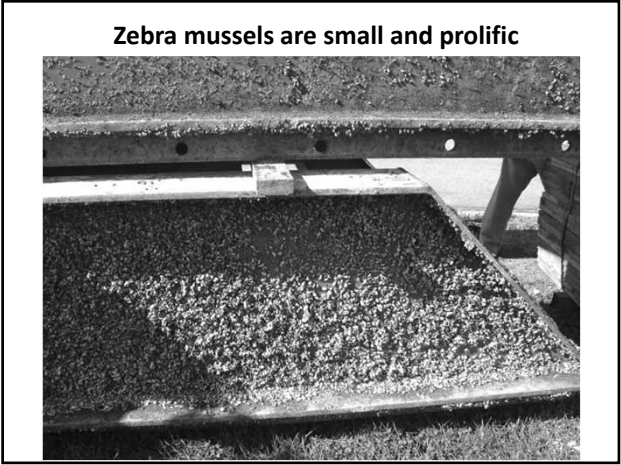


9



Check equipment coming in for invasive species

10



Zebra mussels are small and prolific

11



Concrete Management

12



13



14



15

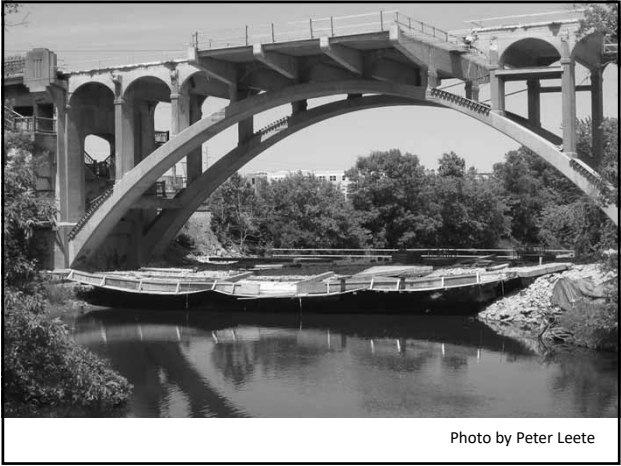
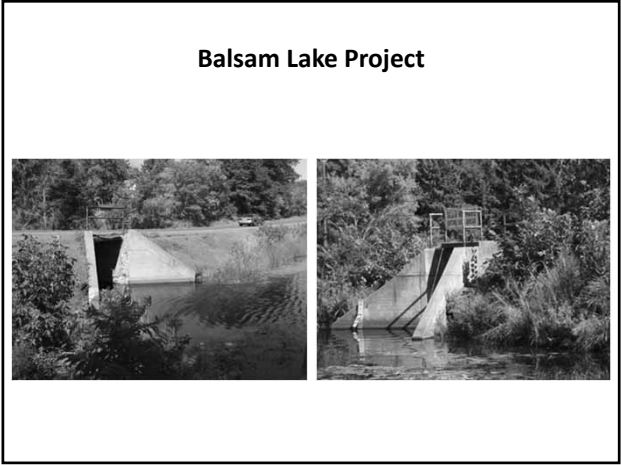


Photo by Peter Leete

16



17



18

Upstream/downstream



19

Starting the project... sheeting



20

Good, straight, sheeting pieces



21

Tearing out old structure



22

Sheeting holding out downstream water



23

**Old structure removed
Down in the trench**



24

Pumping



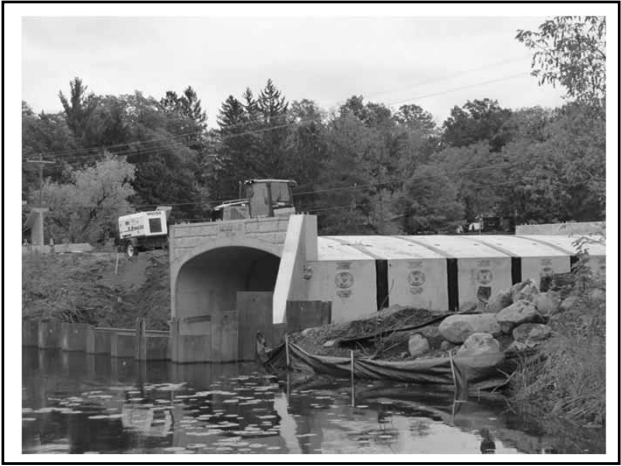
25



26



27



28

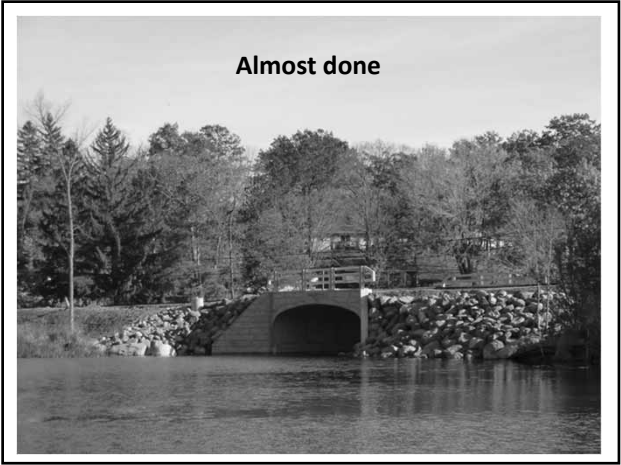


29

Carefully removing sheeting



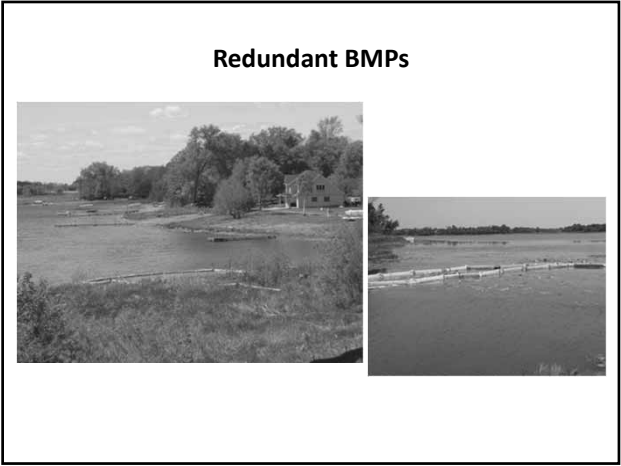
30



31



32



33



34



35



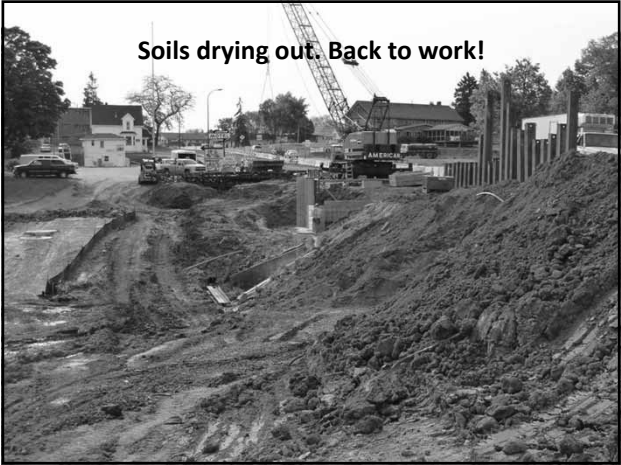
36

Do ponds work?



37

Soils drying out. Back to work!



38

Temporary hydro-mulching



39

Slopes hydro-mulched



40

Temporary stabilization-road



41

Dike off work area... building new bridge



42

Channel to lake... immediate stabilization



43

**Nearing completion
Pond cleaned out again and stabilized**



44

Stabilized for Fall



45

Channel Cleanout



46

Finished the work



47



48

Utility work in the street



49

Solving storm water problems



50

**Directional drilling
Know the material being used**



51

Being careful



52

Being light on the land



53

Dura Base Mats for Lay Down Yards



54

Dura Base Mats for Access and Storage



55

Example Above Ground Utility



56

Logged large trees... used hydro-axe



57

Critical work on frozen ground



58

**Work on frozen ground
Shredded trees work as mulch layer**



59

Follow directly with seed and mulch



60

Greening up



61



Communication on the project for critical area

62

**Lay down Dura Base Mats
Bring in the equipment**



63

**Site management means getting
everyone on the same page.**



64



65

Finished site



66